

# Exhibit A

## RURAL MUNICIPALITY OF LOREBURN NO. 254

### BYLAW 09-2017

#### A BYLAW OF THE RURAL MUNICIPALITY OF LOREBURN NO. 254 TO AMEND BYLAW NO. 02/2013 KNOWN AS THE ZONING BYLAW

A bylaw to amend Bylaw No. 02/13 known as the Zoning Bylaw.

The council of the Rural Municipality of Loreburn No. 254, in the Province of Saskatchewan, enacts to amend Bylaw 02/2013 as follows:

1.) The Zoning District Map referred to in Section 6 of the Zoning Bylaw 02/13 is amended:

- a. By rezoning from AR – Agricultural/Resource District to IC – Industrial/Commercial District as shown in the bold dotted outline on the map which is attached hereto as “Schedule 1” and forms part of this bylaw.
- b. By rezoning from AR – Agricultural/Resource District to CR – Country Residential as shown in the bold dotted outline on the map which is attached hereto as “Schedule 2” and forms part of this bylaw

2.) This bylaw shall come into force and take effect when approved by the Minister.



  
REEVE

  
ADMINISTRATOR

"Certified to be a true copy of Bylaw No. 09-2017 adopted by  
the council of the Rural Municipality of Loreburn No. 254


on the 11 day of July, 2017."

[SEAL]

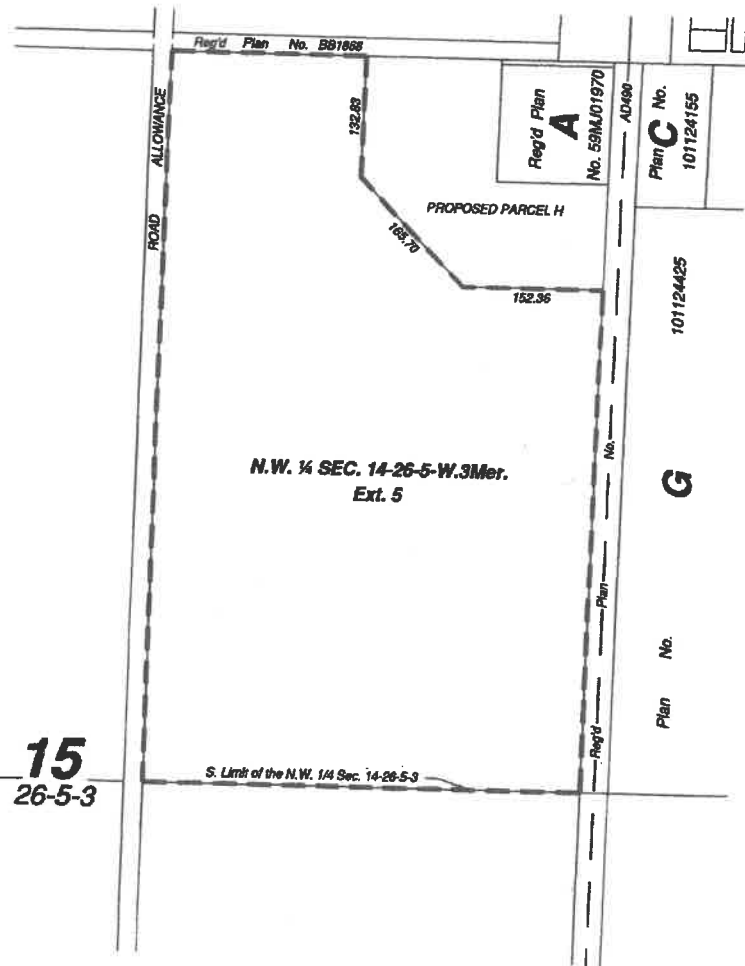
  
Administrator



APPROVED  
REGINA, SASK.  
AUG 23 2017

  
Assistant Deputy Minister  
Ministry of Government Relations

"Schedule 1"



This map forms  
part of Bylaw  
09-17.

*H. J. Jantzen*  
Administrator

By: *John Patton*  
SASKATCHEWAN LAND SURVEYOR

NOTES

- Measurements are in metres and decimals thereof.
- Standard road allowances shown on this plan are 20.117m in width.
- Portion to be rezoned is outlined by a heavy broken line.

**SKETCH PLAN**  
showing proposed zoning change in  
N.W. ¼ Sec. 14 - Twp. 26 - Rge. 5 - W3Mer.  
**R.M. of Loreburn No. 254**  
Scale 1:5000

No.	Date	Revision	Rev. By	Chd. By

Drawn By:	Checked By:	Date:	File No.	Drawing Name:	Rev.
fgb	dpp	May 30, 2017	S17144	S17144-zoning.dwg	0

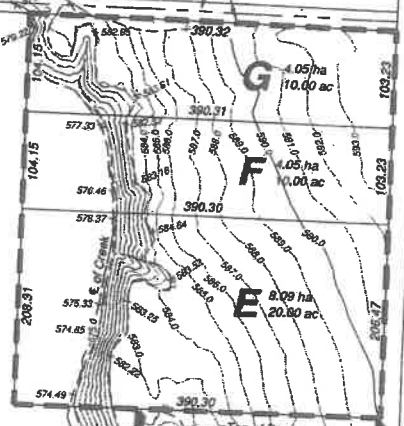
**Meridian**  
Surveys Ltd.

"Schedule 2"

15  
25-5-3

**A**  
Plan No. 101302221

Reg'd Plan  
No. AP5085



S.E. ¼ Sec. 15-25-5-W.3Mer.

9.144m Easement  
Interest Register # 100156564

ROAD ALLOWANCE

10  
25-5-3

Plan No. **D** 101302489

**A**  
Plan No. 101302524

Plan No **C** 101302489

Reg'd Plan  
No. AD490

Railway

Pacific

Centennial I

This map forms  
part of the Bylaw  
09-17.  
Attached  
Administrator

By: *Donna Lynn Hundesby*  
SASKATCHEWAN LAND SURVEYOR

Examined and Approved:

Donna Lynn Hundesby \_\_\_\_\_ Date \_\_\_\_\_

Ronald Irvin Hundesby \_\_\_\_\_ Date \_\_\_\_\_

NOTES

- Measurements are in metres and decimals thereof.
- Standard road allowances shown on this plan are 20.117m in width.
- Portion to be surveyed is outlined by a heavy broken line and contains 20.23 Hectares more or less.
- Distances are approximate and may vary by 10 metres.
- Elevations are geodetic, derived from NRCAN's Precise Point Positioning (PPP) Service.
- Contour intervals are 1.0m.

**PLAN OF PROPOSED SUBDIVISION**  
showing subdivision of part of  
S.E. ¼ Sec. 15 - Twp. 25 - Rge. 5 - W3Mer.  
**RM of Loreburn No. 254, SASK.**  
Scale 1:5000

No.	Date	Revision	Rev. By	Chd. By

Drawn By:	Checked By:	Date:	File No.	Drawing Name:	Rev.
kgb	gar	May 9, 2017	S17102	S17102_Dev.dwg	-0

**Meridian**  
Surveys Ltd.